

No plant material or obstructions may be placed within three feet of the sides of the meter, and three feet from the front, up to a height of seven feet.

Call Miss Utility Before Digging

Digging holes and preparing the soil for tree planting can result in damage to underground electric lines as well as telephone, gas, cable TV, sewer or water lines. Never assume that these utility lines are buried deeper than you plan to dig; in some cases utility lines are very close to the surface. Severing underground utility lines can be life-threatening.



Contact Miss Utility of Virginia at 1-800-552-7000 two business days before landscaping or excavating. They will help you locate and identify underground utility lines. NOVEC underground cable locations will be marked with red paint or red flags.

Summary

With proper planning and forethought, landscaping can be done close to utility line corridors that will remain aesthetically pleasing and not create additional demands for maintenance by NOVEC. We would be happy to offer suggestions specific to your property and site to accomplish this goal. Please contact the NOVEC Right-of-Way Department as listed below.

Contact the NOVEC Right-of-Way
Maintenance Department
Monday — Friday
8:15 a.m. to 5 p.m.
703-392-1661
1-888-335-0500, ext. 1661
Send e-mail to rightofway@novec.com
Visit our website at www.novec.com

Landscaping Guidelines





Utility Line Corridors

NOVEC constructs utility lines to provide reliable, economic electric service to all consumers. Because trees are an integral part of the environment, we make every effort to maintain a balance between aesthetics and safety.

The utility corridor in which NOVEC's overhead or underground lines run on your property is a legal encumbrance on your property deed. This encumbrance, known as an easement, grants the utility certain rights of use for this area of your property. These uses allow the utility to maintain its

facilities safely and have adequate access.

The NOVEC Right-of-Way Maintenance Department is responsible for maintaining tree clearances on all overhead utility easements to the full limits of the easements. Clearances between tree limbs and power lines must be maintained in order to provide safe, reliable electric delivery.

Since typical voltages in these lines range from 12,500 volts to 34,500 volts or even higher, there is no compromise on the necessary clearances we must maintain.

Policies for Planting Beneath Overhead Power Lines

The minimum primary easement width for overhead facilities is 30 feet. Trees are trimmed back every three years to provide at least 10 feet of clearance between branches and electric lines. When the trunks of large trees are located along the edge of the easement, branches will be trimmed back to the main trunk. Trees under electric lines shall be trimmed to clear NOVEC's lowest attachment by at least 10 feet. Danger trees, including dead trees,

which may fall on power lines along outside the easement, will be cut down at the discretion of NOVEC Right-of-Way staff.

Any brush growing within the easement will be removed before it becomes a tree. Herbicides will be used where possible to control the re-growth and growth of new trees within all easements. No new trees are allowed to be planted within the easement area. Every attempt is made to remove older trees, which exist within the easement

area so NOVEC does not have to continually trim these trees. NOVEC is under no obligation to replace these removed trees.

By slowly eliminating existing trees within overhead utility easements and replacing them with more appropriate landscaping, NOVEC can significantly lessen the visual impact and cost of residential tree trimming every three years.

Approved Plantings

The best way for a property owner to avoid future conflicts between trees and utility lines is to plant the appropriate materials for the available site. Plant materials such as turf grasses and ground covers planted within the easement are not only acceptable but are encouraged.

Policies for Planting Above Underground Electric Power Lines

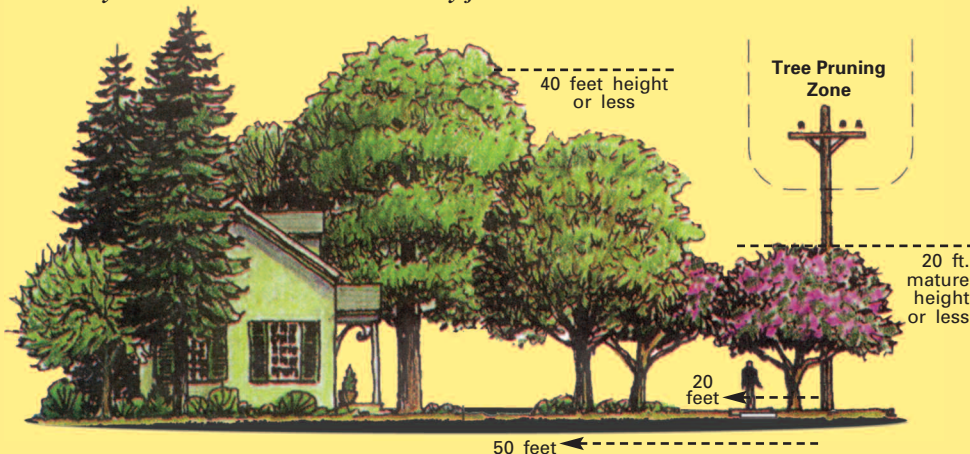
Throughout much of our service territory, underground electric power lines are being installed within a 15-foot wide easement area. Because these lines are located within the root zone area of the soil, they are subject to damage from tree roots growing around the cable.

NOVEC does not allow new trees to be planted within the 15-foot easement area.

Other landscaping materials such as shrubs and bushes are allowed as long as they are planted at least five feet from underground cable. No plantings or structures are to be located within 10 feet of any door and five feet from any side of a green metal transformer box. Meter bases located on your residence must also be kept accessible to NOVEC service technicians.

Plant Taller Trees Away From Overhead Lines

Trees properly placed can lower line clearance costs for NOVEC, reduce tree mortality and result in healthier community forests.



Tall Trees:

- Maple
- Oak
- Spruce
- Pine

Medium Trees:

- Bradford Pear
- Crab Apple

Small Trees:

- Redbud
- Dogwood
- Purple Plum

